



# **ACF Fiorentina**

## **Viola Park**

Via Pian di Ripoli,  
50012 Bagno a Ripoli (FI)

### **HEALTH AND SAFETY INFORMATION: VISITORS AND SPECTATORS**

*pursuant to Legislative Decree 81/08, as amended.*

*Updated on 16 April 2024*

**NOTICE:** This document is an English courtesy translation provided for informational purposes only. The original in Italian version remains the sole legally valid and binding text. In case of discrepancies between this translation and the original, the original version shall prevail, as it is the sole legally valid and binding version



This notice is addressed to guests, visitors and spectators who access Viola Park for the purpose of visiting it or participating in initiatives or sporting events.

### **Risk Factors present**

The following lists the existing risk factors:

- Health areas: these are located in the First Team pavilion and other pavilions and pose a significant risk from the point of view of biological and physical hazards; therefore these areas are not accessible to Visitors or Guests;
- Technical rooms: for the same reason as above, technical rooms are not accessible to Guests and Visitors;
- Outdoor areas: in the outdoor areas there are natural depressions in the terrain, unevenness and slopes in the meadows, and an artificial pond; visitors and guests must pay attention to natural or artificial unevenness as they move around the park; attention must also be paid to the presence of vehicles circulating in the area (cars, golf cars, bicycles, vans, etc.); finally, at the football pitches, there may be automatic lawnmowers, football goals and benches, and various equipment that must not be used or approached by visitors and guests;
- Meal and refreshment preparation and service areas: there are kitchens, bars and preparation areas in various pavilions; activities that present risks of slipping, burns, injuries, etc. are carried out in these areas; only authorised ACF Fiorentina personnel are allowed access to these areas;
- Warehouses and storage areas: at all Pavilions there are storage areas where hazardous substances used for maintenance, documents, equipment etc. are stored, which may pose a risk of being knocked over if not properly handled: visitors and guests are not allowed access to these areas;
- Work equipment: some of the work equipment used in the various Pavilions may pose accidental risks of crushing, cutting, impact, etc.; visitors and guests must not approach or use any equipment present;
- Pavilion H: Pavilion H and the adjoining outdoor areas are dedicated to housing vehicles and equipment of maintenance firms; entering or even approaching the area is strictly prohibited.

### **Safety Rules**

Spectators and visitors are prohibited from:

- accessing areas other than those intended for the public and visitors;
- using ACF Fiorentina equipment, golf cars, bicycles or facilities;
- damaging or tampering with facilities, infrastructure and services, equipment, facilities, etc. in any way;
- obstructing escape and transit routes, standing near passageways, access and exit routes, exits and entrances, stairways and any other escape routes, leaving objects or materials that could obstruct escape routes or cause alarms, leaving items unattended;
- accessing technical areas and rooms where access is prohibited;
- climbing on railings, parapets, dividers, and other structures not intended for public use;
- smoking except in designated areas;
- using open flames, smoke bombs and any other type of ignition;
- bringing into Viola Park:
  - o equipment, chemical agents, means, etc., unless specifically authorised by Management;
  - o weapons, explosive material, pyrotechnic devices, smoke bombs, signal flares, stones, knives or other sharp or cutting objects;
  - o drugs, poisons, harmful substances and flammable material;
  - o any other blunt object that may cause harm to oneself or others;
  - o food or drink;
  - o animals, with the exception of registered guide dogs.
- engaging in aggressive acts.

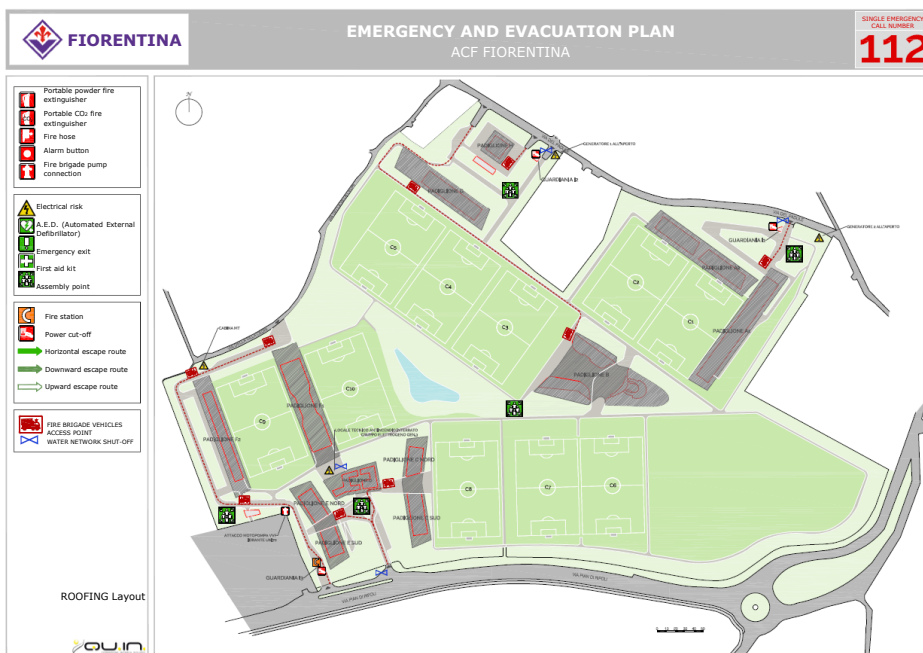


## Emergency management

At Viola Park, specific systems are organised for emergency management:

- ACF Fiorentina operators trained in emergency management (fire safety personnel and first aid staff trained in the use of a defibrillator) are always present;
- At each pavilion there are:
  - o Specific fire safety equipment: fire extinguishers, hose reels, smoke detectors (for use exclusively by authorised personnel) and alarm buttons;
  - o First aid kits and defibrillators (for use exclusively by authorised personnel);
  - o Clearly marked escape routes with specific signage;
  - o In the event of an emergency, guests and visitors will be alerted via voice alarm systems (in Italian and English) that will provide correct instructions for behaviour. In any case, guests and visitors are requested to carefully follow the signage and any further instructions given by ACF Fiorentina's personnel.

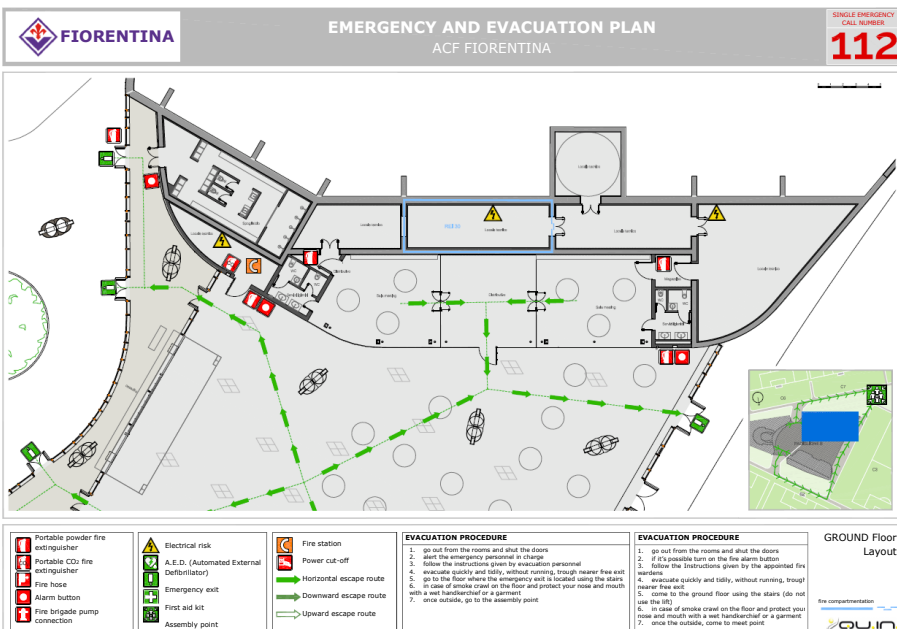
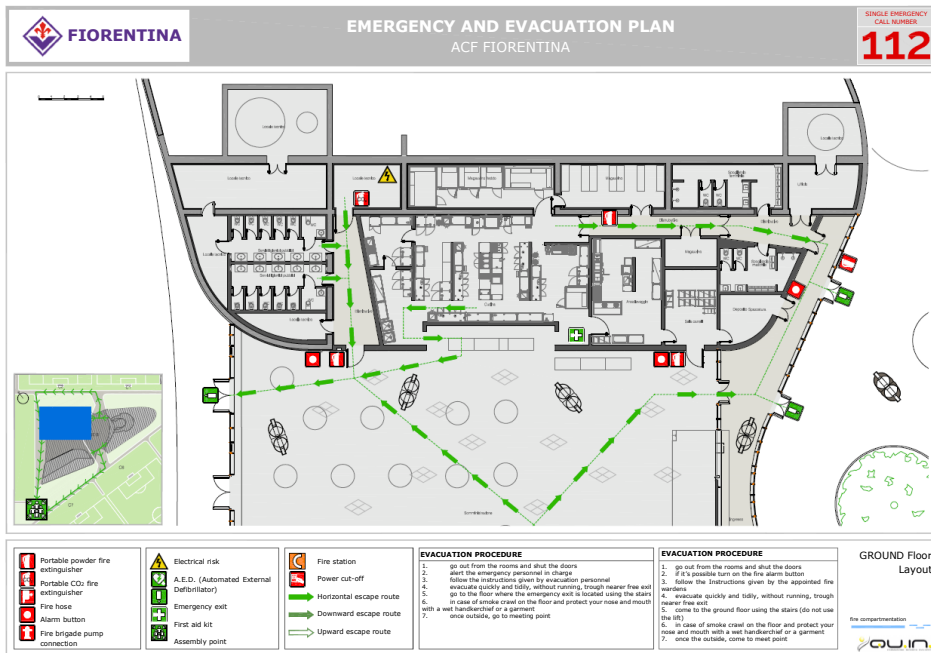
In the following Layout, the assembly points are highlighted, where guests and visitors must go in case of an emergency:





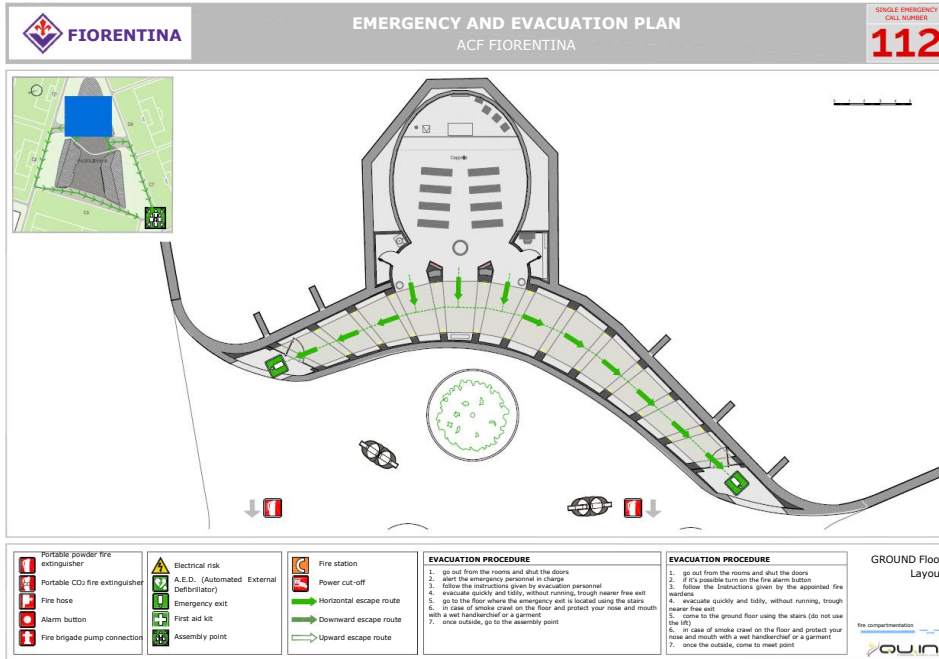
and the equipment available in the Pavilions to which public access is permitted:

## Restaurant/Events Pavilion

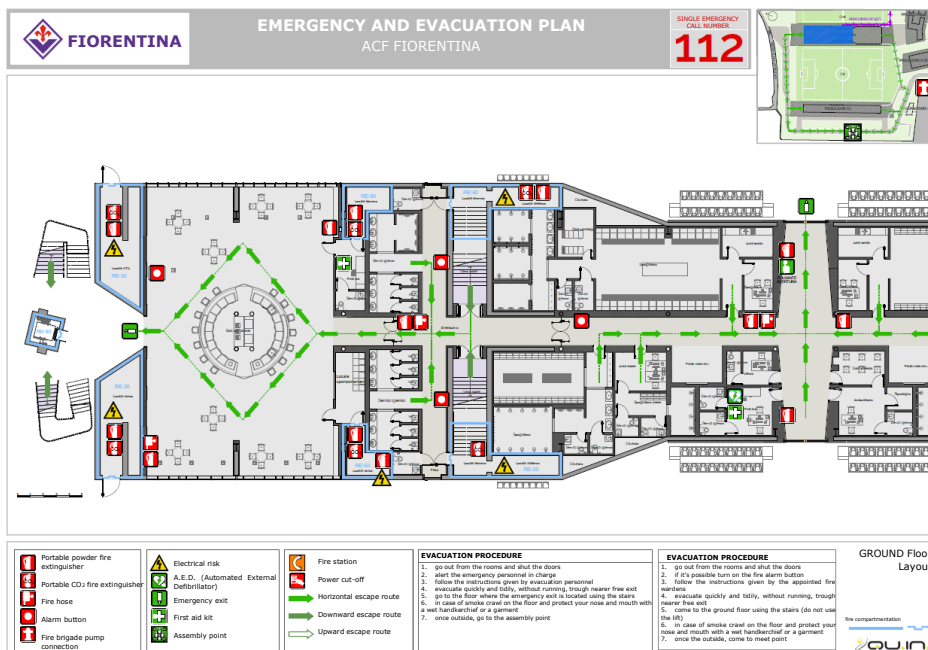




## Chapel



## Curva Fiesole Stadium and Davide Astori Stadium



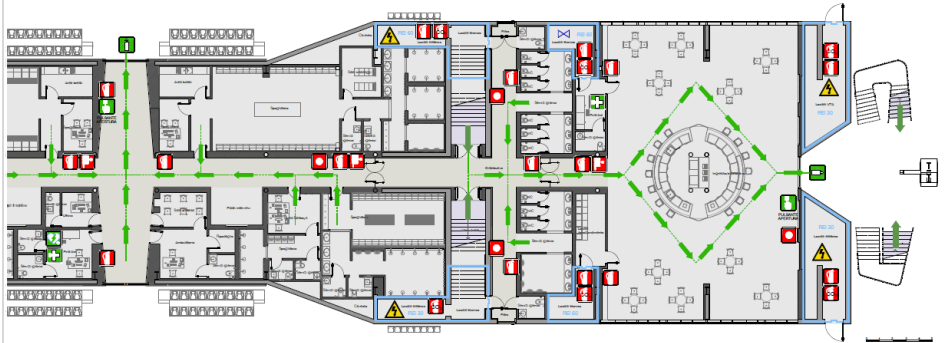


## EMERGENCY AND EVACUATION PLAN

### ACF FIORENTINA

ACF Fiorentina S.r.l. - Viola Park

SINGLE EMERGENCY  
CALL NUMBER  
**112**



Water shut-off



**EVACUATION PROCEDURE**

1. go out from the rooms and shut the doors
2. alert the emergency personnel in charge
3. follow the instructions given by evacuation personnel
4. evacuate quickly and safely, without running, through nearest fire exit
5. go to the floor where the emergency exit is located using the stairs
6. in case of smoke crawl on the floor and protect your nose and mouth with a wet handkerchief or a garment
7. once outside, go to the assembly point

**EVACUATION PROCEDURE**

1. go out from the rooms and shut the doors
2. if it's possible turn on the fire alarm button
3. follow the instructions given by the appointed fire wardens
4. evacuate quickly and safely, without running, through nearest fire exit
5. come to the ground floor using the stairs (do not use the lifts)
6. in case of smoke crawl on the floor and protect your nose and mouth with a wet handkerchief or a garment
7. once the outside, come to meet point

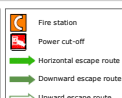
GROUND Floor  
Layout



## EMERGENCY AND EVACUATION PLAN

### ACF FIORENTINA

SINGLE EMERGENCY  
CALL NUMBER  
**112**



**EVACUATION PROCEDURE**

1. go out from the rooms and shut the doors
2. alert the emergency personnel in charge
3. follow the instructions given by evacuation personnel
4. evacuate quickly and safely, without running, through nearest fire exit
5. go to the floor where the emergency exit is located using the stairs
6. in case of smoke crawl on the floor and protect your nose and mouth with a wet handkerchief or a garment
7. once outside, go to the assembly point

**EVACUATION PROCEDURE**

1. go out from the rooms and shut the doors
2. if it's possible turn on the fire alarm button
3. follow the instructions given by the appointed fire wardens
4. evacuate quickly and safely, without running, through nearest fire exit
5. come to the ground floor using the stairs (do not use the lifts)
6. in case of smoke crawl on the floor and protect your nose and mouth with a wet handkerchief or a garment
7. once the outside, come to meet point

GROUND Floor  
Layout

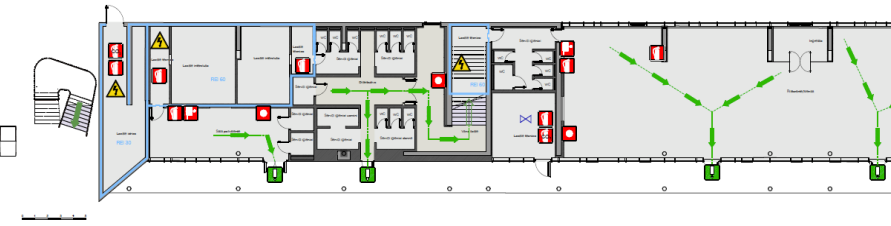




## EMERGENCY AND EVACUATION PLAN

ACF FIORENTINA

SINGLE EMERGENCY  
CALL NUMBER  
**112**



Water shut-off

- Portable powder fire extinguisher
- Portable CO<sub>2</sub> fire extinguisher
- Fire hose
- Alarm button
- Fire brigade pump connection

- Electrical risk
- A.E.D. (Automated External Defibrillator)
- Emergency exit
- First aid kit
- Assembly point

- Fire station
- Power cut-off
- Horizontal escape route
- Downward escape route
- Upward escape route

**EVACUATION PROCEDURE**

1. go out from the rooms and shut the doors
2. alert the emergency personnel in charge
3. follow the instructions given by evacuation personnel
4. evacuate quickly and tidily, without running, through nearest free exit
5. go to the floor where the emergency exit is located using the stairs
6. in case of smoke crawl on the floor and protect your nose and mouth with a wet handkerchief or a garment
7. once outside, go to the assembly point

**EVACUATION PROCEDURE**

1. go out from the rooms and shut the doors
2. if it's possible turn on the fire alarm button
3. follow the instructions given by the appointed fire wardens
4. evacuate quickly and tidily, without running, through nearest free exit
5. come to the ground floor using the stairs (do not use the lift)
6. in case of smoke crawl on the floor and protect your nose and mouth with a wet handkerchief or a garment
7. once the outside, come to meet point

GROUND Floor  
Layout



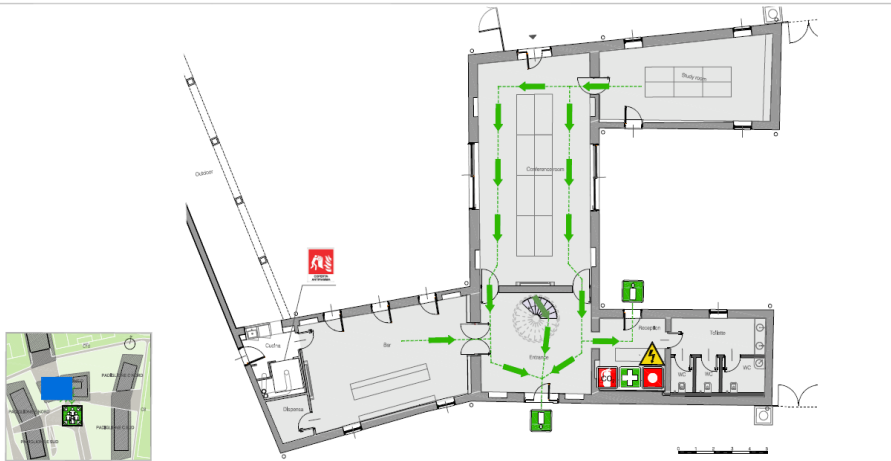
### Villa: outbuildings



## EMERGENCY AND EVACUATION PLAN

ACF FIORENTINA

SINGLE EMERGENCY  
CALL NUMBER  
**112**



- Portable powder fire extinguisher
- Portable CO<sub>2</sub> fire extinguisher
- Fire hose
- Alarm button
- Fire brigade pump connection

- Electrical risk
- A.E.D. (Automated External Defibrillator)
- Emergency exit
- First aid kit
- Assembly point

- Fire station
- Power cut-off
- Horizontal escape route
- Downward escape route
- Upward escape route

**EVACUATION PROCEDURE**

1. go out from the rooms and shut the doors
2. alert the emergency personnel in charge
3. follow the instructions given by evacuation personnel
4. evacuate quickly and tidily, without running, through nearest free exit
5. go to the floor where the emergency exit is located using the stairs
6. in case of smoke crawl on the floor and protect your nose and mouth with a wet handkerchief or a garment
7. once outside, go to the assembly point

**EVACUATION PROCEDURE**

1. go out from the rooms and shut the doors
2. if it's possible turn on the fire alarm button
3. follow the instructions given by the appointed fire wardens
4. evacuate quickly and tidily, without running, through nearest free exit
5. come to the ground floor using the stairs (do not use the lift)
6. in case of smoke crawl on the floor and protect your nose and mouth with a wet handkerchief or a garment
7. once the outside, come to meet point

FIRST Floor  
Layout

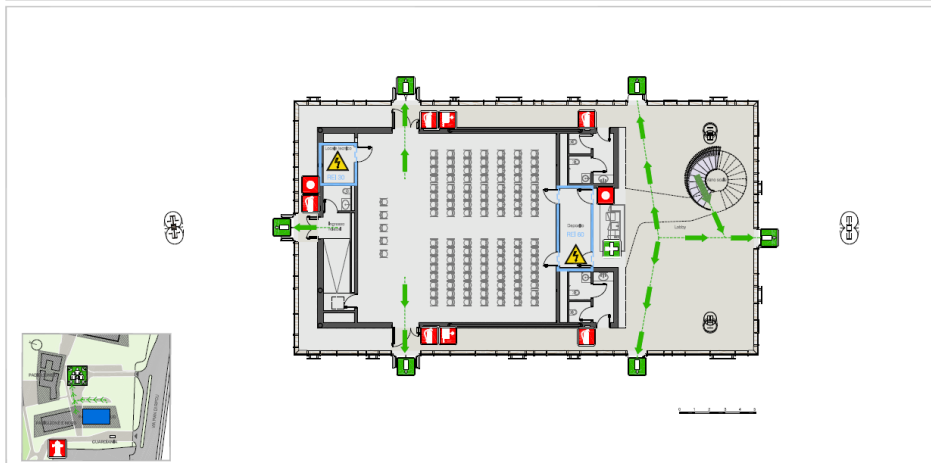




# EMERGENCY AND EVACUATION PLAN ACF FIORENTINA

SINGLE EMERGENCY  
CALL NUMBERS

**112**



Portable powder fire extinguisher	Electrical risk	Fire station	<b>EVACUATION PROCEDURE</b>	<b>EVACUATION PROCEDURE</b>	<b>GROUND Floor Layout</b>
Portable CO <sub>2</sub> fire extinguisher	A.E.D. (Automated External Defibrillator)	Power cut-off	1. go out from the rooms and shut the doors	1. go out from the rooms and shut the doors	
Fire hose	Emergency exit	Horizontal escape route	2. alert the emergency personnel in charge	2. if it's possible turn on the fire alarm button	
Alarm button	First aid kit	Downward escape route	3. follow the instructions given by evacuation personnel	3. follow the instructions given by the appointed fire wardens	
Fire brigade pump connection	Assembly point	Upward escape route	4. evacuate quickly and safely, without running, through nearest fire exit	4. evacuate quickly and safely, without running, through nearest fire exit	
			5. go to the floor where the emergency exit is located using the stairs	5. come to the ground floor using the stairs (do not use the lift)	
			6. in case of smoke crawl on the floor and protect your nose and mouth with a wet handkerchief or a garment	6. in case of smoke crawl on the floor and protect your nose and mouth with a wet handkerchief or a garment	
			7. once outside, go to the assembly point	7. once the outside, come to meet point	

## Useful numbers

In case of need, call 055 503011.

**THANK YOU FOR YOUR COOPERATION**